

PART OF THE N.E. 1/4, OF SECTION 7, T.6N., R.1W., S.L.B. &amp; M.

## BUSINESS DEPOT OGDEN – PLAT 4

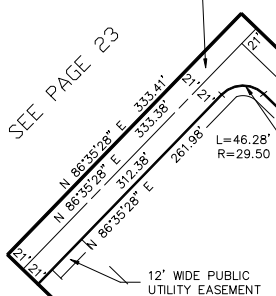
TAXING UNIT: 359

IN OGDEN CITY

SCALE 1" = 100'

600 NORTH STREET  
(A 42' WIDE STREET (RIGHT-OF-WAY))

SEE PAGE 23



20' WIDE PUBLIC UTILITY EASEMENT

SEE PAGE 23

S 03°31'22" E 1636.22'  
 S 03°31'22" E 1580.86'  
 S 03°31'22" E 1594.26' 1615.26'  
 491 NORTH DEPOT DRIVE  
 HOT SPRINGS L.C.  
 113090001  
 10.39 AC±

DEPOT DRIVE

SEE PAGE 23

42' WIDE COMMON ACCESS EASEMENT

FOR COMPLETE ENG DATA SEE  
 ORIGINAL DEDICATION PLAT IN  
 BOOK 53, PAGE 21 OF RECORDS.

10' UTILITY & DRAINAGE EASEMENTS EACH  
 SIDE OF PROPERTY LINES AS INDICATED  
 BY DASHED LINES EXCEPT AS OTHERWISE  
 SHOWN.

N 03°30'02" W 55.36'

400 NORTH STREET  
(A 42' WIDE STREET (RIGHT-OF-WAY))

SEE PAGE 23